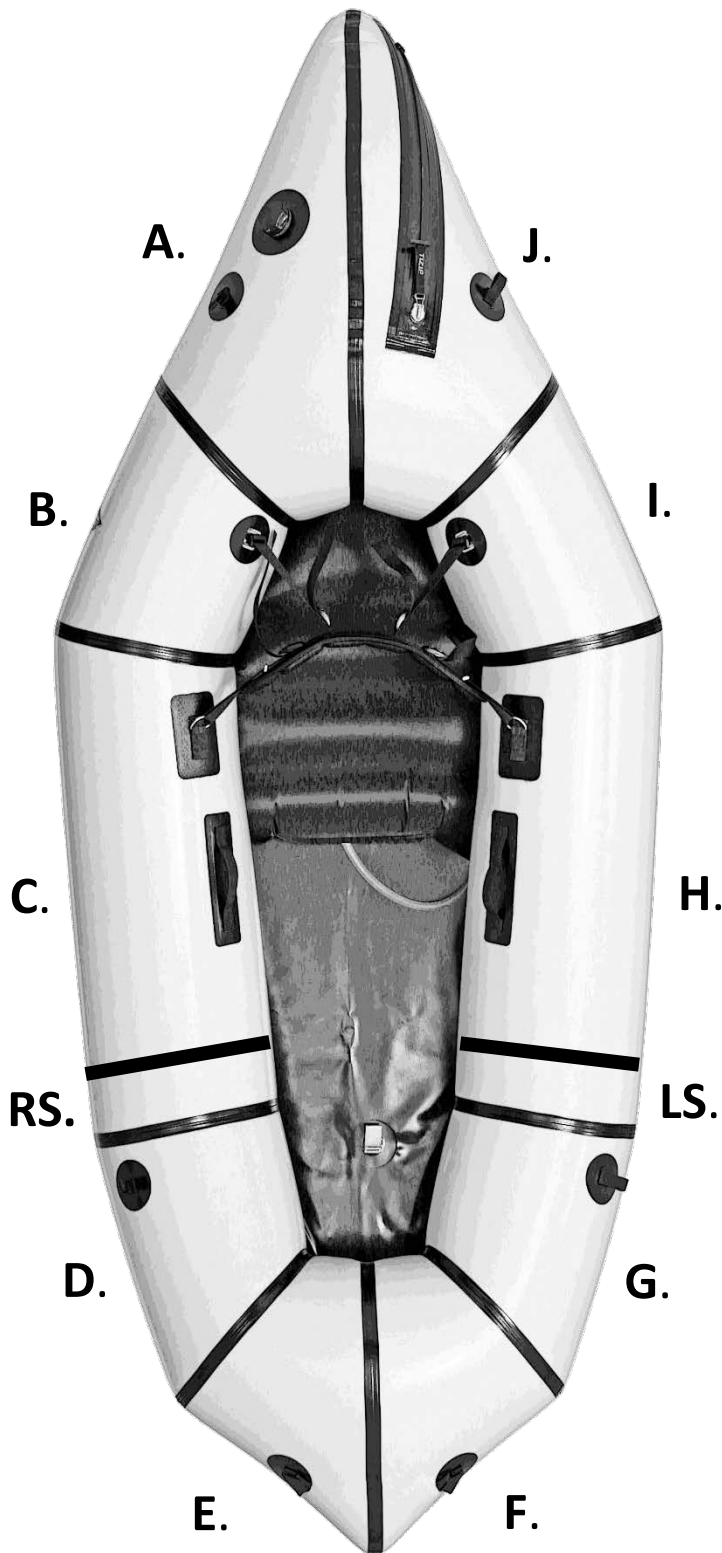


TEN PANEL BOATS: Custom Color Instructions

1. Select a color for each of the ten (10) panels.
2. Either:
 - a. Add your custom color instructions to your order in the 'Customer Notes' field at checkout specifying a color for each panel. e.g. **A.Red B. Red C. Blue D. Yellow E. Yellow F. Yellow G. Yellow H. Blue I. Red J. Red**, or
 - b. Print and color in this diagram with colored pencils/marker and email it over to workshop@alpackraft.com with your order number in the subject line of your email



COLOR OPTIONS:

- **210 d Nylon:**
 - Blue
 - Cedar Green
 - Red
 - Yellow
 - Black*
- **100d Vectran** – call for availability. Likely not available in 2018.
- **200d Vectran** – call for availability – generally:
 - Cedar Green
 - Yellow
 - Red
 - Black accent panels
- **400d Vectran** – call for availability – generally:
 - Cedar Green
 - Red

EXAMPLE** – **A. Red | B. Red | C. Blue | D. Yellow | E. Yellow | F. Yellow | G. Yellow | H. Blue | I. Red | J. Red**

*The black fabric available to mix with the 210d nylon custom color boats is slightly lighter weight.

**You may add left and right bow stripes to Alpacka Series boats if you wish, or leave them out. They're optional! Use LS for left side, and RS for right side. No bow stripes available on Gnus.