

# ALPACKA RAFT CUSTOM LAB ORDER FORM

(email completed form and worksheet to [customlab@alpackaraft.com](mailto:customlab@alpackaraft.com))

Welcome to Alpacka Raft's Custom Lab. The Custom Lab allows you to build a unique Alpacka Raft for your specific color and/or build option needs. If you are new to packrafting, we recommend purchasing one of our standard options as they have been designed and tested for optimal performance for most users. To build the boat of your dreams, follow this process:

- This is a fillable PDF form. We prefer that you fill it out electronically. You can also print and fill out the forms by hand and email us a scanned copy. You should save your completed form as "[Last Name] Custom [Model] Order" (i.e. "Smith Custom Gnarwhal Order").
- Completely fill out this form and the attached Custom Lab Worksheet.
- For the Worksheet, Color/Fabric Selections depend on the option selected:
  - Single Color – Pick **one** color from the available options.
  - Bi-Color Pattern – Pick **two** colors which will be made with an alternating pattern. Primary Color is the A|J|C|H|E|F panels. Secondary Color is the B|I|D|G and CB|CF (if applicable) panels.
  - Multi-Color and Vectran – You get to pick the color of **every** panel in the boat.
  - Some colors are limited quantity and subject to availability.
- Email the completed form and worksheet to [customlab@alpackaraft.com](mailto:customlab@alpackaraft.com). If you want to do more than one custom boat, you can add additional worksheets to your email.
- Our customer service representatives will review your order, determine the total price, and email you an invoice for payment along with a confirmed builder worksheet.
- **Carefully review your confirmed Custom Lab Worksheet prior to making payment. Once you have paid for your order, you cannot make any changes to your order and there are no refunds or cancellations for custom boats.** \_\_\_\_\_ *Initials*

Name: \_\_\_\_\_

Billing Address: \_\_\_\_\_

City: \_\_\_\_\_ State: \_\_\_\_\_ Zip/Postcode: \_\_\_\_\_

E-Mail: \_\_\_\_\_ Phone: \_\_\_\_\_

Shipping Same as Billing (otherwise fill in below)

Shipping Address: \_\_\_\_\_

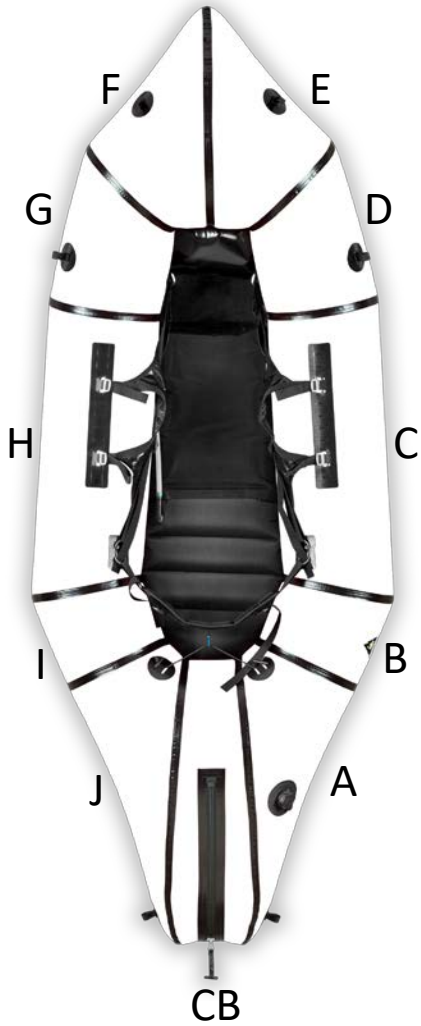
City: \_\_\_\_\_ State: \_\_\_\_\_ Zip/Postcode: \_\_\_\_\_

Country: \_\_\_\_\_

**ADDITIONAL ITEMS (NOTE ANY ADDITIONAL ITEMS YOU WANT TO ORDER BELOW)**

_____	_____
_____	_____
_____	_____
_____	_____

# Gnarwhal Custom Lab Worksheet



Base Price: \$1150

Name: \_\_\_\_\_

### Sizes (Select One)

- Small
- Medium
- Large
- XL

### Build Options (Select One)

- Self Bailing Floor (+\$75)
- WW Deck (+\$250)
- WR Deck (+\$350)
- SB Floor + WW Deck (+\$325)
- SB Floor + WR Deck (+\$425)

### Cargo Fly Options (Select One)

- No (+\$0)
- Yes w/o Dry Bags (+\$150)
- Yes w/ Dry Bags (+\$250)

### Add Ons (Select Any)

- Bike Tiedowns (+\$20)
- Stern Rail (+\$40)
- Long Case (+\$20)
- LW Handles (+\$30)

### Color/Fabric Options (Select One)

- Single Color 210d (+\$50)  
Color Choice: \_\_\_\_\_
- Bi-Color Pattern 210d (+\$100)  
A|J|C|H|E|F: \_\_\_\_\_  
B|I|D|G|CB: \_\_\_\_\_
- Multi-Color 210d (+\$250) (Select at Right)
- Single Color 420d (+\$100)  
Color Choice: \_\_\_\_\_
- Vectran (+\$600) (Select at Right)

### Multi Color Choices

- A: \_\_\_\_\_
- B: \_\_\_\_\_
- C: \_\_\_\_\_
- D: \_\_\_\_\_
- E: \_\_\_\_\_
- F: \_\_\_\_\_
- G: \_\_\_\_\_
- H: \_\_\_\_\_
- I: \_\_\_\_\_
- J: \_\_\_\_\_
- CB: \_\_\_\_\_

## Gnarwhal Color Options

### 210d Nylon

- Sierra Red
- Nautical Blue
- Yellow
- Cedar Green
- Black
- Arctic Blue
- Magenta

### 420d Nylon

- 420d Red
- 420d Cedar
- 330d Kuiu Verde

### 200d Vectran

- 200 Vectran Red

### 400d Vectran

- 400 Vectran Red
- 400 Vectran Cedar
- 400 Vectran Black
- 400 Vectran Lime

### Internal Use Only

Order # _____	Base Price:	\$ 1150.00
SKU _____	Fabric Price:	\$ _____
Order Date _____	Build Price:	\$ _____
Completion Date _____	CF Price:	\$ _____
Checked By _____	Add-Ons:	\$ _____
Batch # _____	<b>TOTAL:</b>	\$ _____

Questions? Email us at [customlab@alpackarraft.com](mailto:customlab@alpackarraft.com) or call 970-533-7119



# GNARWHAL OPTIONS SUMMARY

(More information available in the Custom Lab Catalog)

## Build Options:

- **WW Deck:** Fixed deck that incorporates a removable coaming and spray skirt. Driest and warmest build configuration.
- **WR Deck:** Removable version of the WW Deck. More versatile, but less dry than the standard WW Deck.
- **SB Floor:** Self Bailing floor with holes punched in the edge to drain water and a thicker seating system to allow paddlers to sit above the water line.
- **SB Floor + Spray Deck:** This option allows you to combine both a Self-Bailing floor and a spray deck of your choice.

## Add-Ons:

- **Bike Tiedowns:** Two strap plates installed on the bow for securing your bike top tube with straps.
- **Stern Rail:** Four extra grab loops installed in the stern, which allows you to run a grab line on your stern.
- **Long Case:** Two strap plates installed on the right side of the packraft, which provides a low-profile method for securing long items like skis and fishing rods.
- **LW Handles:** We attach two lightweight carrying handles on the sides of the cockpit, which makes the boat easier to carry by one person when portaging.

